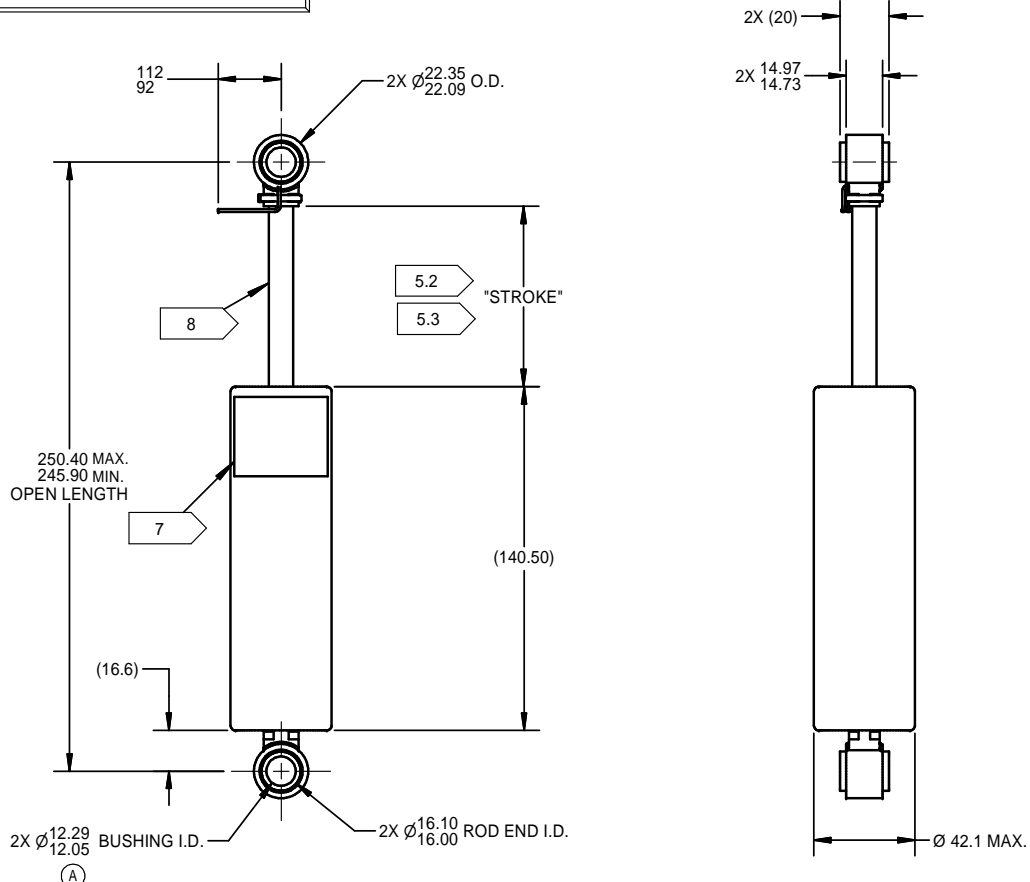


EAR CONTROLLED

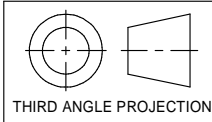
THIS TECHNICAL DATA/TECHNOLOGY IS SUBJECT TO THE JURISDICTION OF THE UNITED STATES EXPORT ADMINISTRATION REGULATIONS (EAR). DIVERSION CONTRARY TO U.S. LAW IS PROHIBITED.

LET.	ALTERATION	DR.	CHECKED BY
A	147492	DS	RG0 7/14/09



- ELECTRICAL SPECIFICATION:** INPUT CURRENT =1 AMP MAX. CONTINUOUS
=2 AMP MAX. INTERMITTENT
INPUT VOLTAGE =12 VDC
RESISTANCE =5 OHMS AT AMBIENT TEMP.
RESISTANCE =7 OHMS AT 71°C
- DAMPER FORCES: (PEAK TO PEAK)** 0.05 M/S AT 1 AMP =>2447 N
0.20 M/S AT 0 AMP =<667 N
- MECHANICAL SPECIFICATIONS:** MAX. OPERATING LOAD, TENSILE =8896 N
MAX. OPERATING TEMP. =71°C
STORAGE TEMP. LIMITS =-40°C TO 100°C
- DURABILITY:** DAMPER FORCE (PEAK TO PEAK) @ 0.20 M/S @ 0 AMPS=<890 N
AFTER 2 MILLION CYCLES @ ±12.7mm, 2 HERTZ WITH INPUT CURRENT 0.4 AMPS.
- DESIGN NOTE:** 5.1 DAMPER STROKE MUST BE LIMITED WITHIN THE SPECIFIED STROKE RANGE. ALLOW A MIN. SAFETY CLEARANCE OF 6 mm OR DAMPER DAMAGE MAY RESULT.
5.2 STROKE: 74.4/73.0 (AT FULL EXTENSION).
5.3 STROKE MEASURED FROM BOTTOM OF ROD END TO TOP OF BEARING HOLDER (NOT HOUSING CRIMP).
- DAMPER NOT TO SUPPORT COMPRESSION END STOP.**
- LABEL INFORMATION:** LORD LOGO
LORD PART #
DATE (MM/DD/YY)
S/N (WKYRXX)
US PATENTS
PRODUCTION TEST RESULT: PASS/FAIL
- SURFACE OF ROD TO BE PROTECTED DURING SHIPPING, HANDLING, AND INSTALLATION. NO MARKS PERMITTED.**

RD-8041-1
LORD P/N



PROPRIETARY NOTICE	UNLESS OTHERWISE SPECIFIED
THE INFORMATION CONTAINED HEREIN IS PROPRIETARY TO LORD CORPORATION AND SHALL NOT BE REPRODUCED OR DISCLOSED IN WHOLE OR IN PART OR USED FOR ANY DESIGN OR MANUFACTURE EXCEPT WHEN SUCH USER POSSESSES DIRECT WRITTEN AUTHORIZATION FROM LORD CORPORATION.	F.M.P. = FOR MANUFACTURING PURPOSES ALL DIMENSIONS ARE TO POINTS OF INTERSECTION DIMENSIONING/TOLERANCING PER ASME Y14.5M - 1994 ABBREVIATIONS, ACRONYMS, TERMINOLOGY PER TS-027 MACHINED SURFACES = 3.2 MICROMETERS MAX BREAK ALL SHARP EDGES .6/1 AVERAGING OF DIAMETERS NOT PERMISSIBLE ALL DIMENSIONS ARE IN MILLIMETERS DIMENSIONS IN [] ARE IN INCHES
SURFACE AREA (SQ. cm)	CALC. WT. (Kg.) 0.919 ELASTOMER VOL (CU. cm)

LORD CORPORATION Cary, NC 27511-7923		DWG TYPE CC	DIV I
DR. BY D. SHOFF 2/26/09	CKD. BY R. OBERACKER 7/13/09	MR DAMPER ASSEMBLY LONG STROKE	
ENGR. APPR. M. JARZOMSKI 2/26/09	MFG. APPR. N/A		
Q.E. APPR. N/A	CAGE 9J509	SIZE B	DRAWING NO. RD-8041-1
		SH 1	OF 1
			REV A

LORD PROPRIETARY